



## EVS

### CH:3- USES OF ANIMALS

Name: \_\_\_\_\_

Date: \_\_\_\_\_

Class: II Sec: \_\_\_\_

#### I Fill In The Blanks:

- 1 We get wool from \_\_\_\_\_.
- 2 Wool is used to make warm \_\_\_\_\_.
- 3 Cows, sheep, goats, buffaloes and yaks are called \_\_\_\_\_.
- 4 We get silk fibre from \_\_\_\_\_.
- 5 Leather is made from the skin of \_\_\_\_\_ animals.
- 6 \_\_\_\_\_ is used for meat and wool.
- 7 Camels and donkeys are used to carry \_\_\_\_\_.
- 8 Butter and ghee are made from \_\_\_\_\_.
- 9 Oxen is used to till the \_\_\_\_\_.
- 10 Animals that can be kept at home are called \_\_\_\_\_.

#### II How Are The Following Animals Useful? Write Your Answer In The Blanks:

- 1 Hens and ducks: \_\_\_\_\_  
\_\_\_\_\_.
- 2 Sheep and goats: \_\_\_\_\_  
\_\_\_\_\_.
- 3 Camels and yaks: \_\_\_\_\_  
\_\_\_\_\_.
- 4 Oxen and horses: \_\_\_\_\_  
\_\_\_\_\_.

#### III Match The Following:

- |   |          |     |               |
|---|----------|-----|---------------|
| 1 | Bird     | [ ] | a. honey      |
| 2 | Sheep    | [ ] | b. eggs       |
| 3 | Camel    | [ ] | c. wool       |
| 4 | Bees     | [ ] | d. silk       |
| 5 | silkworm | [ ] | e. carry load |



IV Answer The Following:

Name the animals that give us milk?

---

---

Which animals are used to carry loads?

---

v Colour The Pictures And Complete The Passage:

1

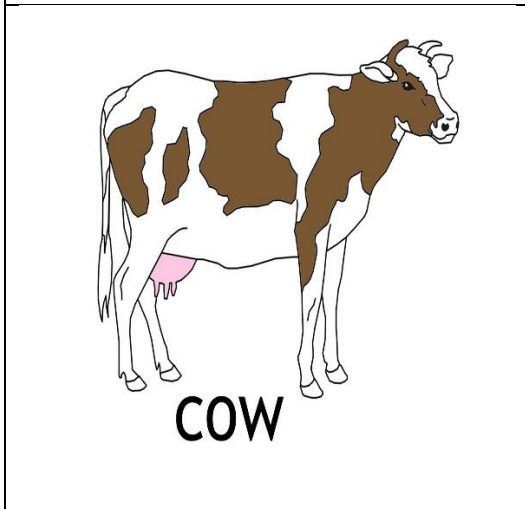


This is a \_\_\_\_\_.

It is a \_\_\_\_\_ animal.

It gives us \_\_\_\_\_.

2



This is a \_\_\_\_\_.

It is a \_\_\_\_\_ animal.

It is used \_\_\_\_\_.